



User's Manual

PROGRAMMABLE DC POWER SUPPLY APS-7306L



Thank you for choosing AKTAKOM Power Supply.

www.tmatlantic.com

BRIEF PRODUCT INTRODUCTION

APS-730X series single-channel programmable power supplies are designed to supply wireless devices with stabilized voltage or current, while used in debugging processes, repair and laboratory research in normal climate conditions.

Power Supply APS-7306L in addition to stand-alone control (control and monitoring from the front panel) can be operated remotely by computer via USB 1.1 interface and LAN, or by a mobile device (IPad, iPhone, any Android-based mobile devices) via Ethernet.

INSTRUCTIONS

- Never put the heavy objects on this equipment;
- Never crash or damage the machine due to improper operation;
- Never make the equipment be static discharge;
- Don't block the cooling exit;
- Don't make the equipment power on when it is connected to the power;
- Never disassemble it unless getting the confirmation of the professionals.

WARNING

- Output voltage 110V 60Hz
- The power cord must be with reliable grounding to avoid the electronic shock

Model **APS-7306L**

Output voltage	0-30V
Output current	0-5A
Output power	150W

TECHNICAL PARAMETERS

These parameters are tested under $25\pm 5^{\circ}\text{C}$ and after 2s power on.

Power effect: $CV \leq 0.01\% + 3\text{mV}$ (AC $\pm 5\%$)

Load effect: $CV \leq 0.01\% + 2\text{mV}$

Ripple and noise: $\leq 2.0\text{mV}_{\text{rms}}$

Output accuracy: V: $0.5\% + 20\text{mV}$

I: $0.5\% + 10\text{mA}$

Read-back accuracy: V: 10mV

I: 1mA

Types of protection: over current, over voltage, over temperature

Working environment: $0\sim 40^{\circ}\text{C}$

Humidity: less than 80%

ATTENTION

- Kindly use the rated input voltage;
- Never operate at a high temperature and the cooling exit mustn't be blocked;
- Please make the fuse with rated parameters equipped.

DIAGRAMS OF PANELS

Front Panel

1. Power: on/off button
2. Off/On: output on/off
3. MEN: memory save
4. M1-M3: memory recall
5. Voltage/Current: select between voltage or current
6. OCP: over current protection
7. CC indicator: constant current mode
8. CV indicator: constant voltage mode
9. Voltage display (volt)
10. Current display (ampere)
11. Voltage/Current: select between voltage or current for adjustment
12. Output terminals-
13. Earth (ground) terminal
14. Output terminals+

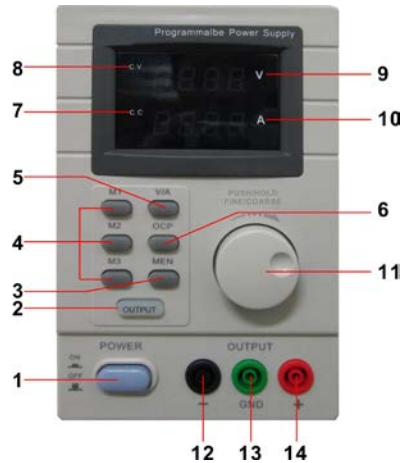


Fig. 1

Rear Panel

- 13. Cooling Fan
- 14. Power cable connection plug
- 15. LAN port
- 16. USB port



Fig. 2

The Power Supply can operate in several control modes:



MANUAL MODE.



CONTROL MODE WITH BUILT-IN MEMORY.



REMOTE CONTROL MODE OF APS-730XL BY COMPUTER VIA USB INTERFACE.



REMOTE CONTROL MODE OF APS-730XL BY COMPUTER VIA LAN INTERFACE.



MANUAL MODE

1. Output Voltage Adjustment: Press the **V SET** key, the value of voltage setting will be displayed on the voltage display; and the setting will flicker. Repress **V SET** and the selection of the setting values will be changed. Turn the knob and the setting value of the output voltage will be adjusted while the setting flickers. Stop turning for a few seconds the setting will stop flickering and the power will return to the initial status.

2. Output Current Adjustment: Press the **I SET** key, the value of current setting will be displayed on the current display; and the setting will flicker. Repress **I SET** and the selected place of the setting values will be changed. Turn the knob and the setting value of the output current will be adjusted while the setting

flickers. Stop turning for a few seconds, the setting will stop flickering and the power will return to the initial status.

3. Over current protection: Press the **RECALL** key and the storage direction will flicker. At this time, press **OUTPUT** and it will stop flickering, then the power is in the mode of over current protection; that is, the over current protection starts then the current is up to the set value; Switch off the output voltage and the over current protection light [OCP] is on. Eliminating the mode of the over current protection: press the **RECALL** key and the storage direction will flicker. At this time, press **OUTPUT** and it will stop flickering, then the power supplies will exit from the over current protection mode.



CONTROL MODE WITH BUILT-IN MEMORY

Storage Selection: Press the **RECALL** key and the storage direction light will flicker, which indicates the current storage data. Then press the ↓ key and the next parameters of voltage and current can be selected; press ↑ and the previous parameters can be selected. In any storage direction, the relevant storage units can be stored then the parameters of voltage and current are set.

PRODUCT REGISTRATION

Please register on <http://www.tmatlantic.com> before the software installation and the device configuration for remote control mode operation



Fig. 3

New user registration

Registration

Login (min. 3 characters):*

Password:*

Password confirmation:*

E-mail:*

Name:*

Last Name:*

Phone:

Spam bot protection (CAPTCHA)

CAPTCHA image characters:*

Fig. 4

And then download the program installer following the recommendations on the web site www.tmatlantic.com



ADJUSTMENT OF REMOTE CONTROL MODE OF APS-730XL BY COMPUTER VIA USB INTERFACE



Connect the power supply to the power outlet using the power cable.

Fig. 5

Switch on the power.



Fig. 6

Connect the USB cable to the relevant inputs of the power supply and the PC.



Fig. 7

Install AKTAKOM Power Manager 21 Light software to your PC. You can download the software from www.tmatlantic.com.

If necessary the software can be recorded to the CD and shipped to the customer for an additional cost.



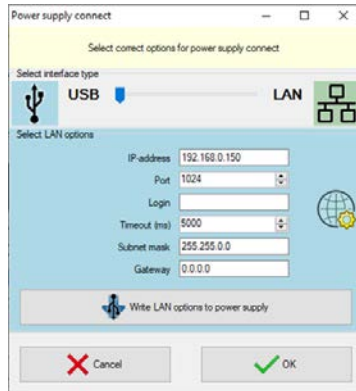
To download the AKTAKOM Power Manager 21 Light software, go to www.tmatlantic.com, log in with your username and password. If you have not previously registered on www.tmatlantic.com, follow the link "Registration" and specify all the necessary data. Then select your device from the list and enter its serial number. ATTENTION! Serial number must be entered exactly as it appears on the device, with all the letters, numbers and other characters. Next, you need to register your AKTAKOM product if you have not done so already, and accept the License Agreement, then you will be provided with links to the files available for download.

AKTAKOM Power Manager 21 Light software provides control of output voltage and current in arbitrary (manual) mode. Main program window view:



Pic 1

When the application is running the power supply connection window will open (See Pic 2).

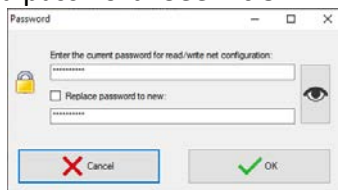


Pic 2

Select the necessary interface type (USB or LAN), enter the settings for the network connection (IP, port, login) and press OK key to connect to the power supply. You will see the connection state in the main program window, "Connection state" block.

In case of successful connection the program will remember the settings and next time it will try to use them to reconnect to the device.

To restore the connection break in the program operation click "Connect" button in the main window. Also use this window to record the network settings to the power supply memory. To do this open "Connection" window after the device connection via USB, enter the necessary settings in IP, port, login fields and click "Write LAN options to power supply." When recording you will need to enter a password. See Pic 3.



Pic 3

To change the password check box "Replace password to new".

After the device connection its current state will be displayed in Measurements block.

Constant voltage and current mode is controlled by the elements of Control block. To switch on/off the output use Exit key.

Visit www.tmatlantic.com for more information.